

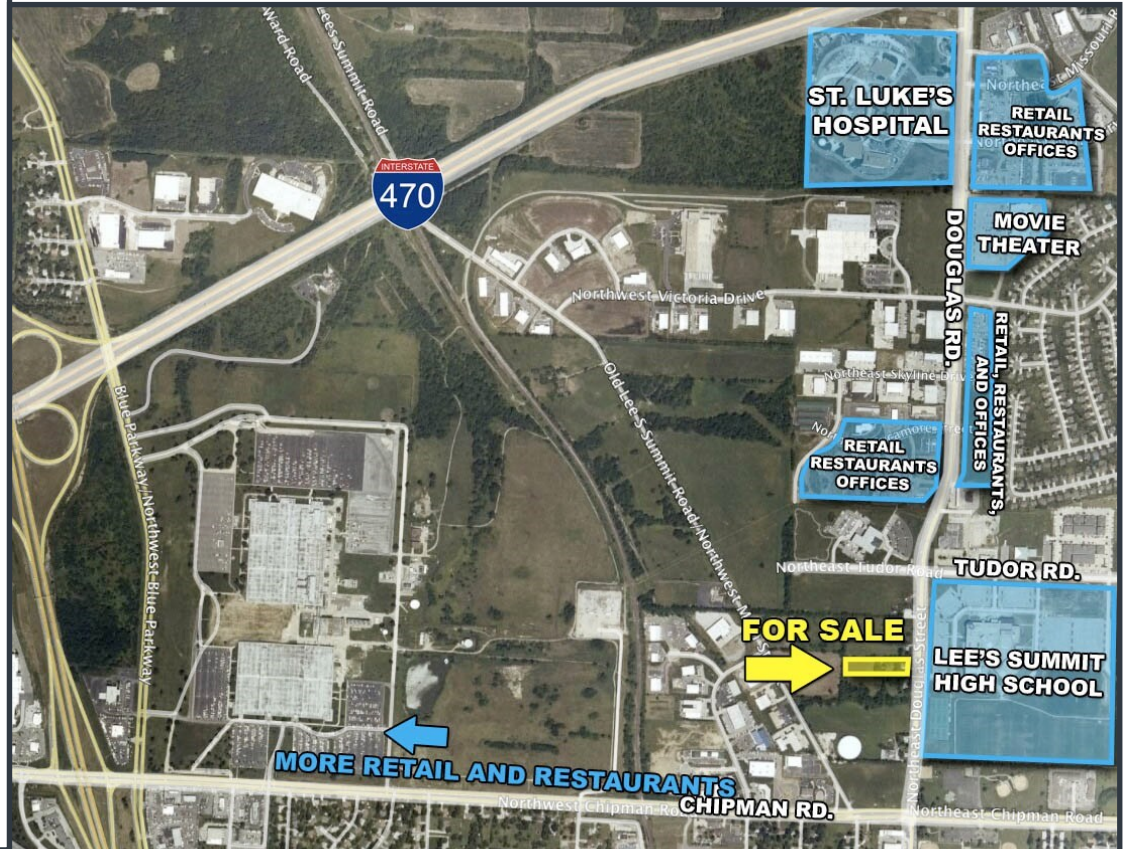
FOR SALE

ASHER
— REAL ESTATE —

www.asher-kc.com | 816-319-2525

830 NE Douglas Road, Lee's Summit, MO 64086

- + 3.00 AC
- + \$495,000
- + City approved for R4 zoning
- + Across from Lee's Summit North High School
- + Last remaining undeveloped area on Douglas Street
- + 300+ multi-family units being built adjacent to property on the north
- + Close to amenities
- + Easy highway and interstate access



DAVE MEYER LLC

Dave Meyer
Chris Foresee

816-985-3089 dave@davemeyerllc.com
816-582-4082 chris@davemeyerllc.com

www.davemeyerllc.com